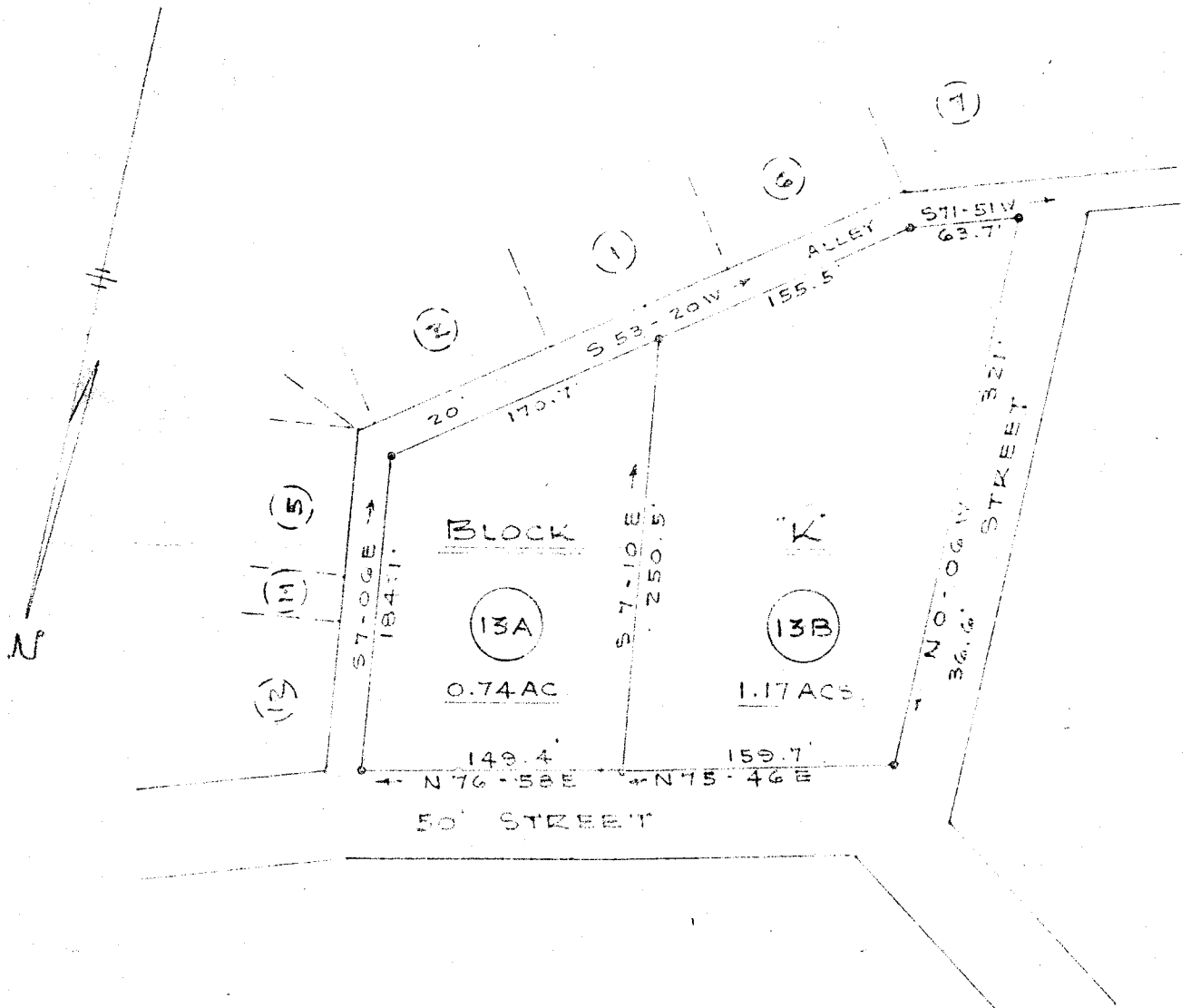


Note: Iron Pipe at all corners.



Plat Showing Property of
 J. P. STEVENS & CO., INC.
 Located in Slater Plant Village,
 SLATER, GREENVILLE COUNTY, S. C.

MAR 14 1956

6715

Scale: 1" = 100' Dated: February 28, 1956

Pickell & Pickell - Engineers
 Greenville, S. C.

See Vol 88-128

#6715 Filed This 14 day of March 1956
 And Recorded in Vol. 88 Page 128 at 11:15 a.m.
 Ollie Garnsworthy
 Register Mesne Conveyance Greenville County, S. C.

For Plat of Lots 3, 4, 5+6 Blk S.
 See Page 130 in this Book.